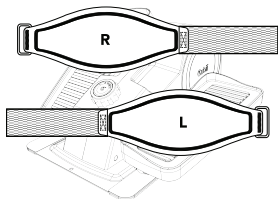


Cubii®

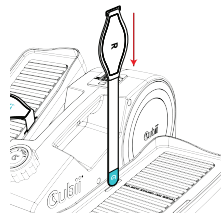
The approachable, at-home, way to wellness for every body.

Foot Strap Installation Instructions

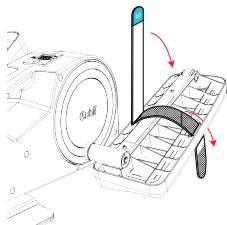
Cubii can be effectively used with or without foot straps.
Try them out and choose what works best for you!



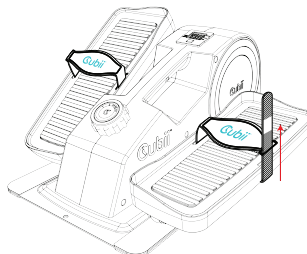
1. Locate the "R" (right) and "L" (left) on the back of each foot pad to determine which pedal (right or left) to install each strap on.



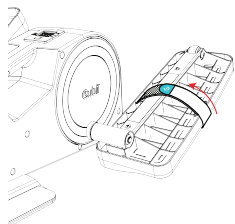
2. Thread the strap through the inner slot with the logo facing as shown.



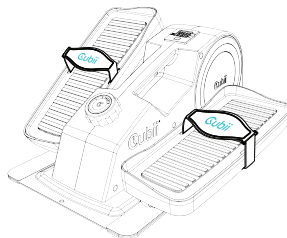
3. Flip the pedal over. Thread the strap back through the other slot as shown, careful not to twist the strap.



4. Flip the pedal back. Thread the strap through the metal ring.



5. Flip the pedal back over. Pull strap and secure to velcro until desired tightness.



Ready, Sit, Go!



Materials

Made In China

60% Polyester

20% Neoprene

20% Spandex

Care Instructions

Hand Wash in Cool Water With Mild Soap

Rinse Thoroughly

Hang Dry

Do Not Iron

Do Not Bleach

Do Not Dry Clean

Enjoying Your Foot Straps?

We would love to hear what you think!
Leave us a review on our website cubii.com



Customer Support

+1-844-282-4401
support@mycubii.com
cubii.com/help

Designed in Chicago, IL / Made in China
Manufactured for Fitness Cubed Inc.
320 W Ohio Street, Suite 700, Chicago, IL 60654